

collaborate without boundaries

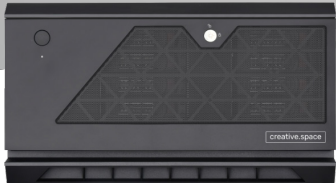
creative.space®

powered by DigitalGlue #

Managed Storage for Creatives

Collaboration | Workflows | Storage | Support

MADE SIMPLE



// ROGUE PRO

Mobile NAS
Collaborate Anywhere
96TB - 120TB



// AUTEUR

4K-Ready NAS Storage
Real-Time Performance for Small to Medium Teams
96TB - 240TB



// DEUS EX

Hybrid NVMe SSD and HDD
Medium to Large Teams and Image Sequences
192TB - 480TB



// TANK

High Density NAS
Scale-Out Nearline Storage
960TB - 1.2PB

To learn more, email sales@digitalglue.com, call **888.519.2021**, or visit us at **creative.space**

Managed Storage for Creatives

At DigitalGlue we understand that you are the expert when it comes to your team's unique needs. That's why over the past three years, we have reached out to creative professionals in the industry to gather their specific requirements and build a solution that caters to those needs. Our goal is to make storage effortless by streamlining complex IT-related tasks and providing a user-friendly experience, backed by our dedicated DevOps support team.

Storage as a Service

- Hardware at Your Facility
- Intuitive Web and Desktop Software
- Proactive Support
- Fixed Monthly or Annual Payments

The creative.space Difference

- No IT Experience Required
- Consistent Support with Ongoing Dialog
- Flexible Contracts that Scale Based on Your Needs
- In-house Software Development Team

Collaborative Storage

Say goodbye to storage solutions that can't keep up with your team's evolving needs. creative.space is a service designed with one goal in mind: to give back valuable time to creatives, by taking care of hardware and complicated software so they can focus on what they do best – creating.



Speed

- Real-Time Playback
- Render FPS
- Copy, Move, and Delete



Ease of Use

- Intuitive User Experience
- Support For Creative Apps
- Workflow Tools



Sustainability

- Proactive Support
- Hardware Maintenance
- Data Migration

Why We Chose ZFS for our File System

ZFS is an enterprise class file system and logical volume manager that is scalable and includes extensive protection against data corruption. It eliminates many of the deficiencies found in existing file systems and hardware RAID devices.

Multi-Tier Storage Strategy

The DigitalGlue team partners with clients to create a customized storage solution that meets their unique creative, financial, and security needs. As your capacity requirements expand, you can make the transition smoothly, with the support of our dedicated team, ensuring the protection of your data at all times.



Camera Media



Shuttle Drives



Production Storage



Archive



Cloud

Monthly Payments

Get the storage solution you need now, with the ability to grow and enhance it as your requirements evolve. A creative.space service contract covers hardware, software, and support, and gives you the option to pay either monthly or annually.



1, 2, 3, or 5 Year
Commitment



Flexible Contract



Full Warranty
On-Site Spares Kit



Modular Upgrades

Latest Technology

Our architecture was designed from the ground up to leverage the latest software and hardware technology to create a cutting-edge storage solution. All of our units come equipped with the latest version of creative.space software, and as a part of your contract, you'll receive any future software releases as soon as they become available.



12 GB/S SAS



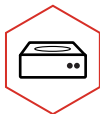
10/25/40/100GbE



Self-Healing



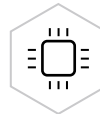
128-Bit File System



16/18/20 TB
Helium Filled HDDs



3.2/7.68/12.8/15.36 TB
NVMe SSDs



Multi-Core CPU
Load Balancing



DDR4 ECC Random
Access Memory

Proactive Support

Every system is equipped with built-in monitoring that closely tracks thousands of metrics, triggering alarms and allowing for remote support to quickly identify and resolve potential issues and failures before they occur.



Throughput Analysis

Multi-tiered alarms notify support immediately if systems are being overtaxed.



S.M.A.R.T. Testing

Drive failures can be predicted months in advance and gracefully replaced.



Bandwidth Monitoring

Metrics provide insight into settings not configured properly which could result in dropped packets.



Planning For Growth

We work with you to scale efficiently and avoid the pitfalls of managing large datasets.

Client Success Stories

Post Production Services



“We go above and beyond [for our clients] and didn’t think it was too much to expect the same from our storage vendors, but it took DigitalGlue and creative.space to find that level of service. They came on-site, trained our staff, and helped us understand how the product works and what makes it unique. They gave us the kind of service you’d expect if you were making a huge investment or dropping a pile of cash, but this is an affordable monthly fee – and still DigitalGlue delivered spectacularly.”

– **Steve Bannerman**
CEO, Local Hero Post

Local Hero Post

Local Hero is a well-respected full-service boutique with a long list of high-profile clients, including HBO, Netflix, Lionsgate, and Apple. With credits that include the movie “Home Again” featuring Reese Witherspoon and the HBO series “Big Little Lies” and “Sharp Objects,” the post house is now focused primarily on 4K projects and is branching into color HDR content as well. Steve Bannerman, the CEO of Local Hero, chose creative.space’s //DEUS EX hybrid NVMe SSD and HDD media storage solution to balance solid-state and spinning disk technology and ensure seamless playback. Designed for high-resolution, end-to-end post-production workflows, the //DEUS EX eliminates the need for separate online and nearline systems, allowing the entire team to work collaboratively with popular platforms like DaVinci Resolve and Adobe Creative Cloud.

Concerts + Events



“Our film crew of over 700 members operates 24 hours a day for 5 days capturing thousands of hours of content, from over 200 performances and an additional 38 crews filming mini-docs, interviews, and art pieces. There are over 240 camera cards being transferred daily, and the system ran smoothly the entire production”

– **Ryan Stiles**
Head Producer, Pickathon

Pickathon

Pickathon is a three-day music festival held annually in August at Pendarvis Farm in Happy Valley, near Portland, Oregon. Starting as a bluegrass festival in 1998, the event has grown into a celebration of all types of music, including hip-hop, punk, heavy metal, country, and indie rock. Over the course of five days, including setup and breakdown, a large crew collects thousands of hours of content. To support creative teams in collaborating in real-time with high-resolution media, the //AUTEUR was the ideal solution for Pickathon’s live event needs. The system built for Pickathon was the entry-level //AUTEUR, equipped with (12) 10TB drives for a total of 120 TB of RAW capacity and plenty of room for growth. The monitoring tools provided by the creative.space web app UI allowed Pickathon to monitor usage in real-time, quickly identify any workflow bottlenecks, and keep production running smoothly.

“The //DEUS EX has met our expectations in terms of speed, connectivity, features, and security. Our main goal was really to get a connected storage solution that would allow people across our different verticals to utilize the spaces in their respective editing and finishing software. We need it to work with Adobe, Avid, and DaVinci seamlessly and grant administrators the controls they need to make sure the media is managed properly, which it absolutely does.”

– **Chase Logan**
Head of Post Production, Brat TV



Content Creators

Brat TV

Brat TV is a digital network and production company that takes its name from the “Brat Pack” of the 80s. With a focus on Gen-Z, the company posts its TV-quality content, such as “Chicken Girls,” “Total Eclipse,” and “Mani,” to YouTube every day. Brat TV’s YouTube channel has over 3.5 million subscribers. The DigitalGlue and Brat TV teams worked closely to design and implement a creative.space solution that would fit seamlessly into their existing workflow, giving the AEs control over media interchange and eliminating the hassle of drive management with a shared storage space. Since the installation, projects are completed faster, with more iterations possible, leading to higher-quality final outputs. The time previously spent on managing data between storage devices is now invested in creative output. With marketing now directly integrated into the post-production process, Brat TV has been able to take a more strategic approach and explore new monetization opportunities.

“We’d spent 4 years searching for a centralized shared storage solution before we found creative.space, and now because of the time it’s saved us in the last 6 months, we’re on track to make back our investment this year.”

– **Sandy Thailing**
Video Producer/Production Manager, CoR



House of Worship

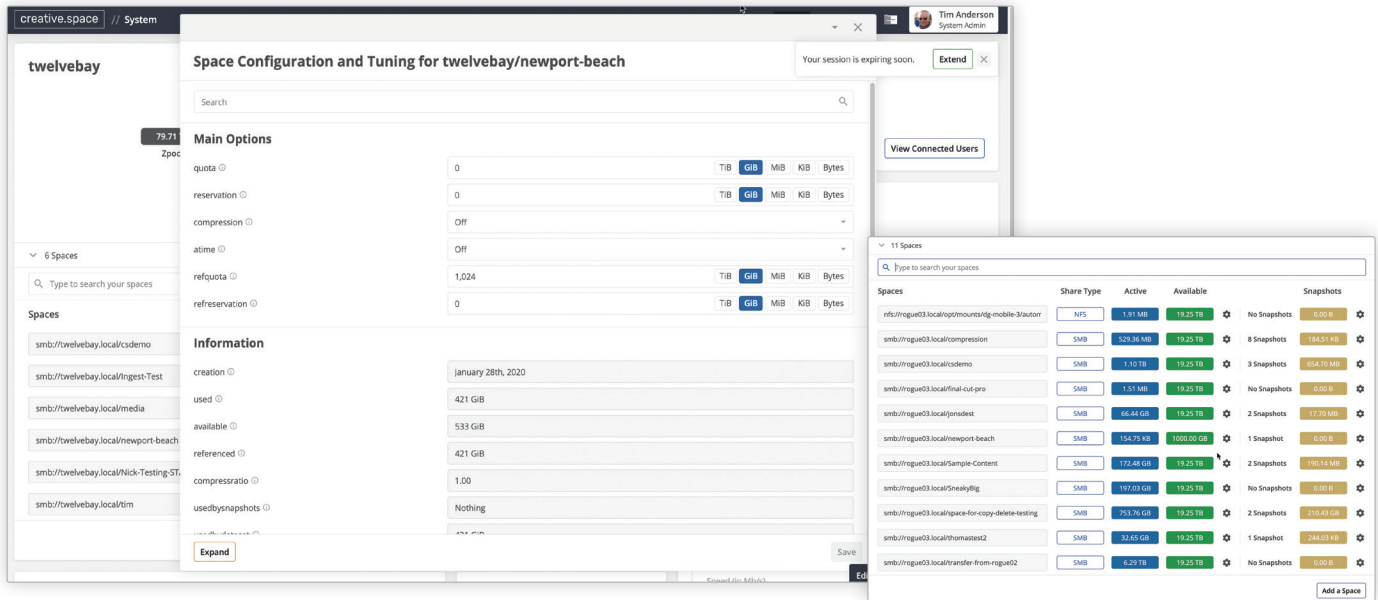
Church of the Resurrection

As the video production manager for Church of the Resurrection (CoR) in Leawood, Kansas, Sandy Thailing leads one of the biggest and most influential mainline denominational churches in the country. In addition to providing content for the church’s multisite midweek and weekend contemporary and traditional worship services, the video team at CoR is also responsible for producing content for areas such as social media, online devotionals, conferences, special events, and a weekly television broadcast. DigitalGlue worked with CoR to implement two new NAS //ROGUE units as remote or at-home storage and an //AUTEUR storage on-premise server. The //AUTEUR server “lives” at the church, in the machine room of Building A – one of three main buildings on campus and home to the church’s new sanctuary and a large control room where most of the technology for producing worship services is maintained and weekly online worship services are produced.

Client Driven Design

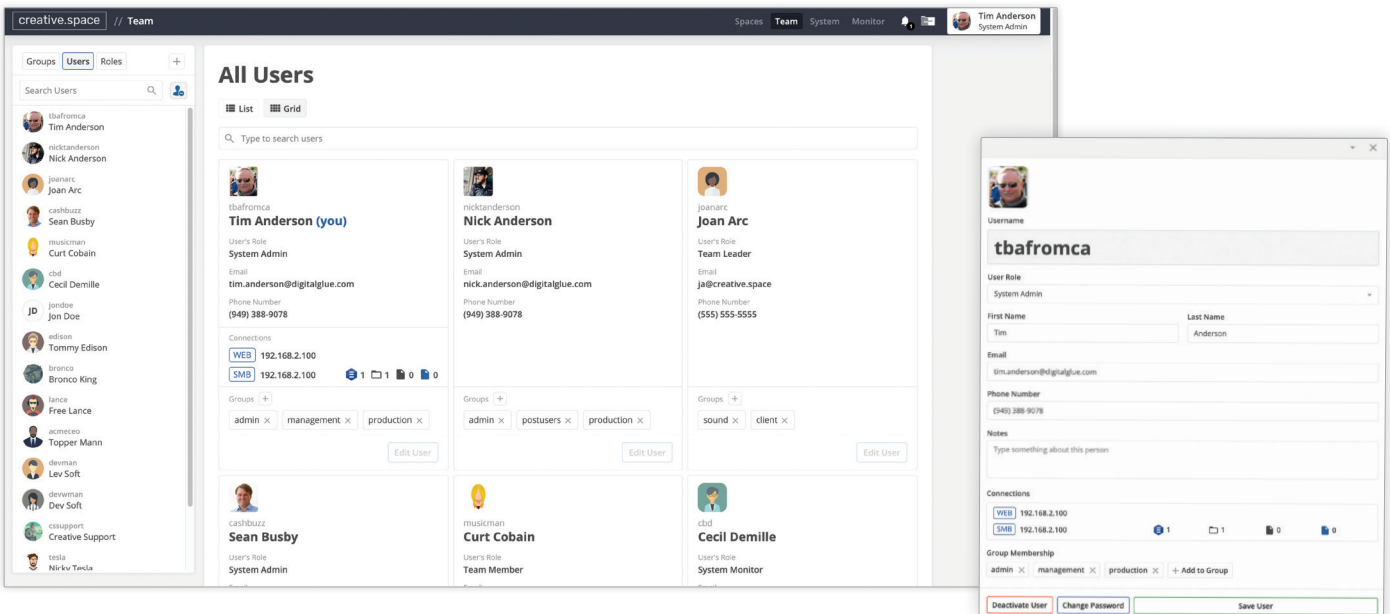
Shared Spaces

Shared Spaces allow users to divide their storage into virtual partitions and take full advantage of the system's performance and capacity. Quotas and Reservations give users control over system usage, while snapshots provide data protection against accidental deletion and ransomware attacks.



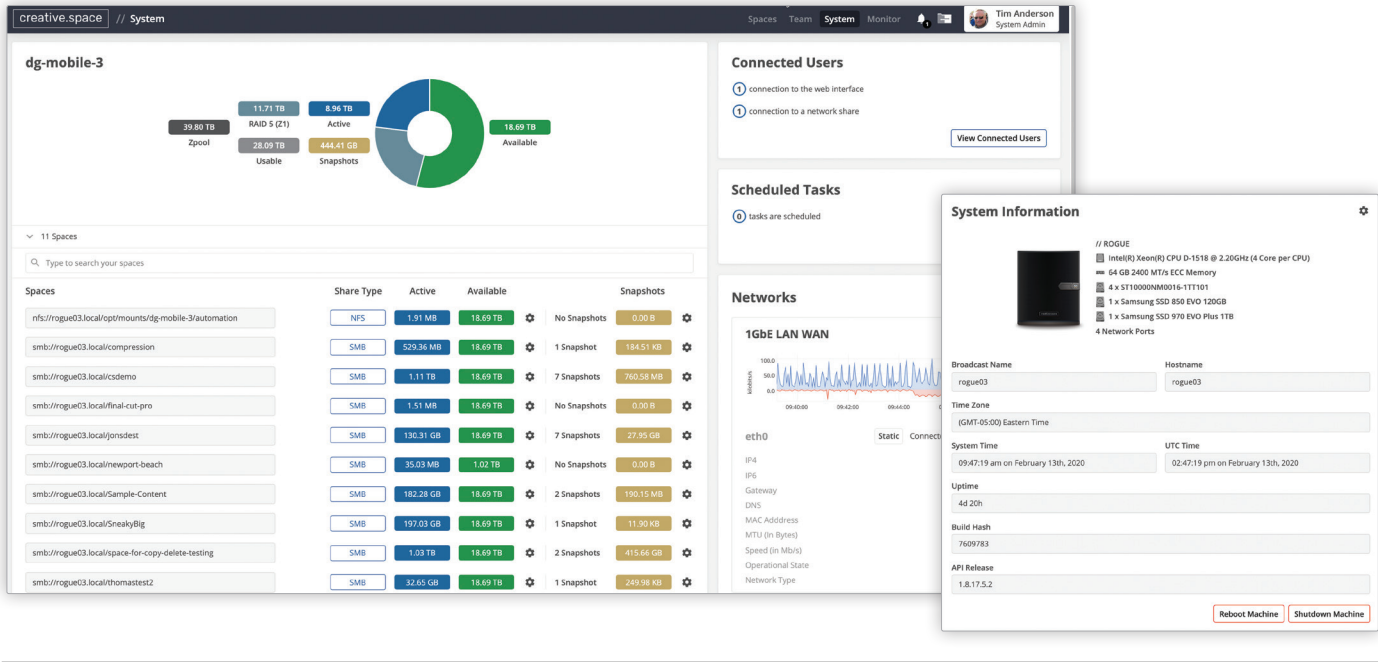
Built-in User Management & Permissions

Every system comes with an integrated enterprise LDAP user management authentication server, giving Administrators complete control over who can access Spaces, folders, and files, without the need for an additional dedicated server. The administrators have visibility into connected users and the resources they are accessing, and can create groups to simplify permissions among users.



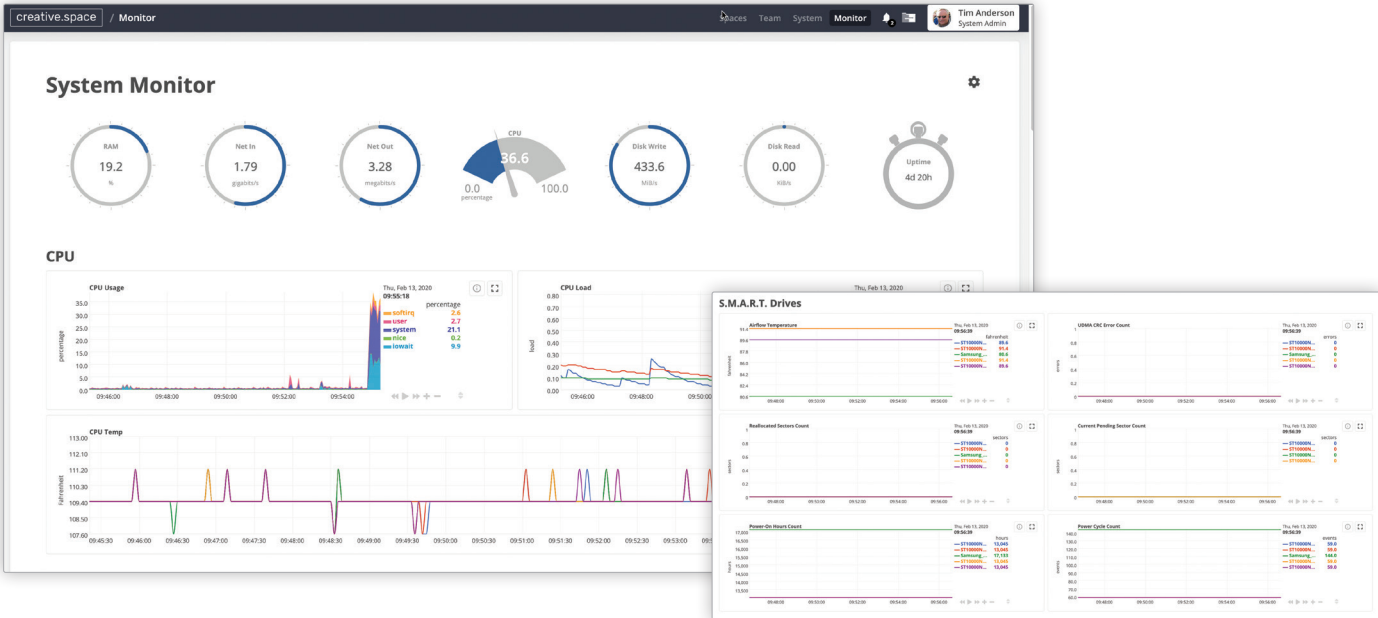
Streamlined System Management

A comprehensive system dashboard lets users quickly understand storage capacity and availability, connected users, scheduled tasks, network statistics, and system information.



Monitoring

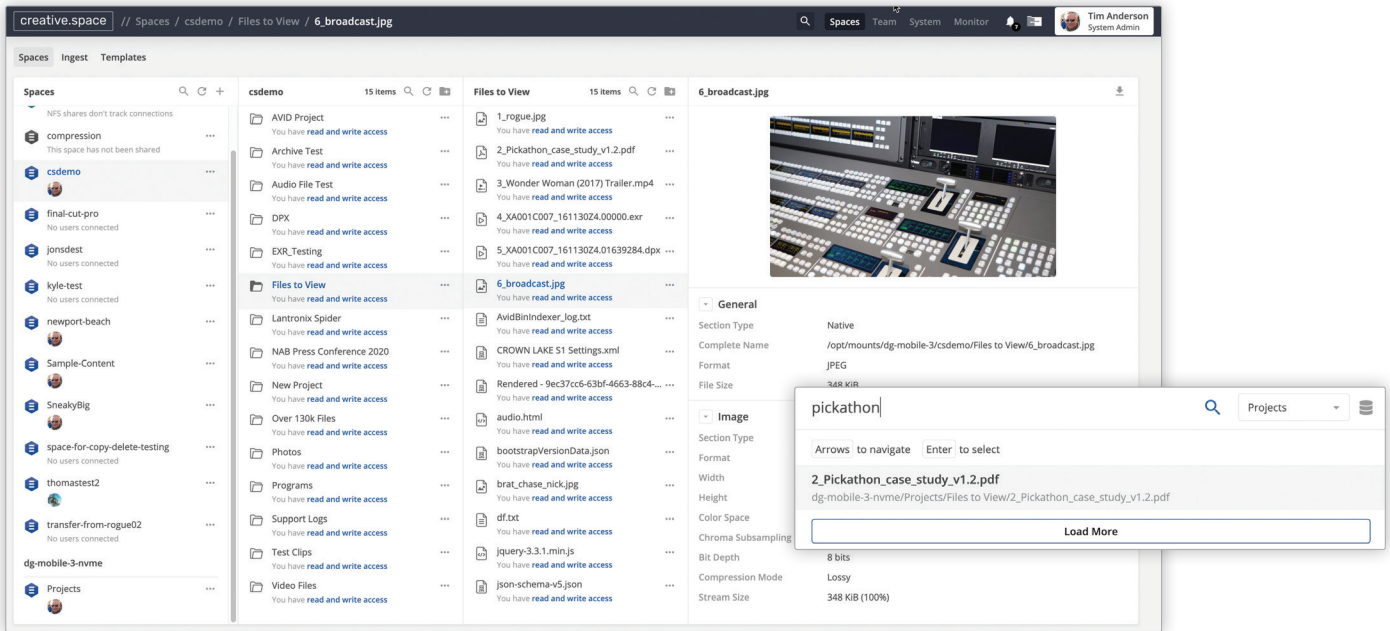
Every second, thousands of metrics are captured to give our proactive support team valuable insights into the health of the system. The user-friendly system monitoring dashboard allows users to quickly identify failures and bottlenecks.



Client Driven Design

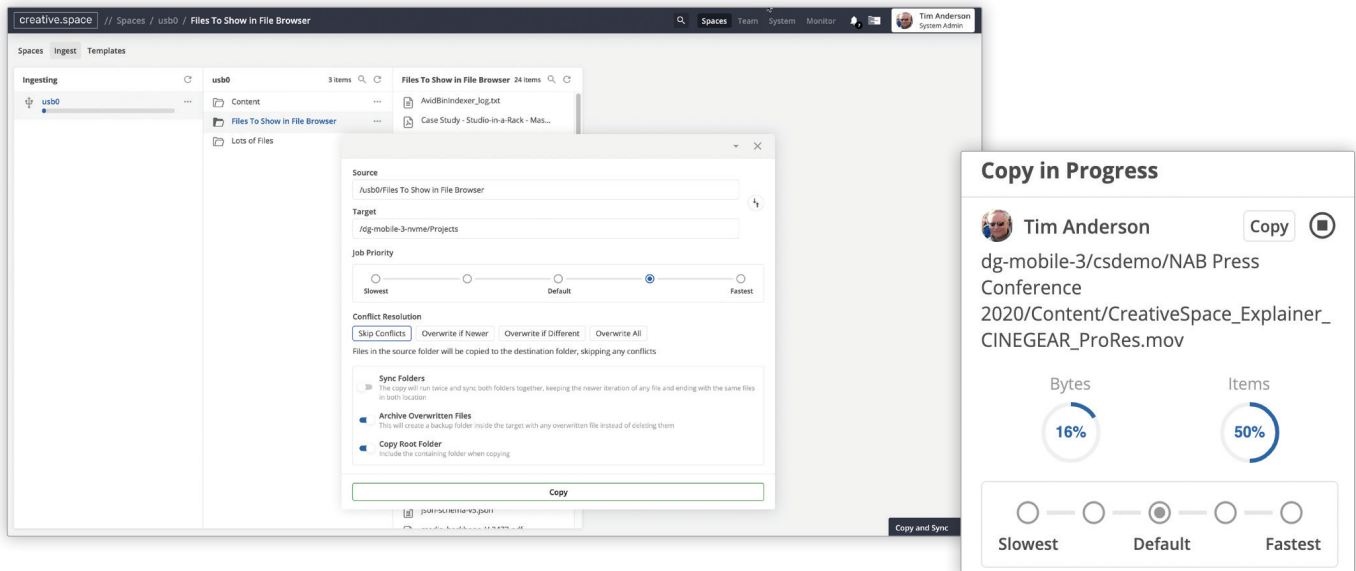
File Browser

Easily manage your folders with the ability to create, rename, and delete them, and assign permissions. Use the file browser to copy links, compare and sync folders, apply folder structure templates, preview files, view metadata, and download files. Finding folders and files is made simple with the built-in search functionality. Navigate your Spaces on a web browser with intuitive, enhanced keyboard navigation.



Copy and Sync

With powerful conflict resolution options, users can easily compare and synchronize files between Spaces and attached USB devices. Whether you need to consolidate project folders or ingest new files from a camera card that wasn't wiped beforehand, it's not a problem.



Folder Structure Templates

Manage your projects effortlessly by creating folder structure templates with creative.space. With the ability to mount temporary storage, you can simply drag and drop folders and files. When building a template, anything placed in [brackets] becomes a variable and is applied to all files in designated folders. Administrators can then assign user and group permissions to each folder.

The screenshot displays the 'Studio-X' template configuration in the creative.space interface. The 'Variables' section lists several fields with their types and default values:

Variable	Type	Starting Number / Default Value
[project name]	Auto Increment	0001000
[client]	Text and/or Number	AcmeTV
[job id]	Text and/or Number	2020-
[shoot date]	Date	
[camera letter]	Text and/or Number	CR-01000
[camera model]	Text and/or Number	Sony F57
[stage]	Text and/or Number	Post

The 'Applying Template to /csdemo/AVID Project' dialog shows the following configuration:

Field	Value
Path	/csdemo/AVID Project
[project name]	AUTO
[client]	AcmeTV
[job id]	2020-
[shoot date]	Feb 13th, 2020
[camera letter]	CR-01000
[camera model]	Sony F57
[stage]	Post
[roll]	AB-01000

Scheduling Snapshots and Tasks

The integrated system scheduler gives users the ability to schedule tasks, such as hourly, weekly, and monthly snapshots, with automatic deletion after a specified time period.

The 'Scheduled Tasks' interface shows three tasks:

- Monthly 9:40 pm**: Tim Anderson scheduled this task on Feb 12th, 2020. Creating snapshot: `twelvebay/newport-beach` every month starting on Feb 12th, 2020 09:40 pm.
- Weekly 9:35 pm**: Tim Anderson scheduled this task on Feb 12th, 2020. Creating snapshot: `twelvebay/media` every week starting on Feb 12th, 2020 09:35 pm.
- Daily 9:25 pm**: Tim Anderson scheduled this task on Feb 12th, 2020. Creating snapshot: `twelvebay/Ingest-Test` every day starting on Feb 12th, 2020 09:25 pm.

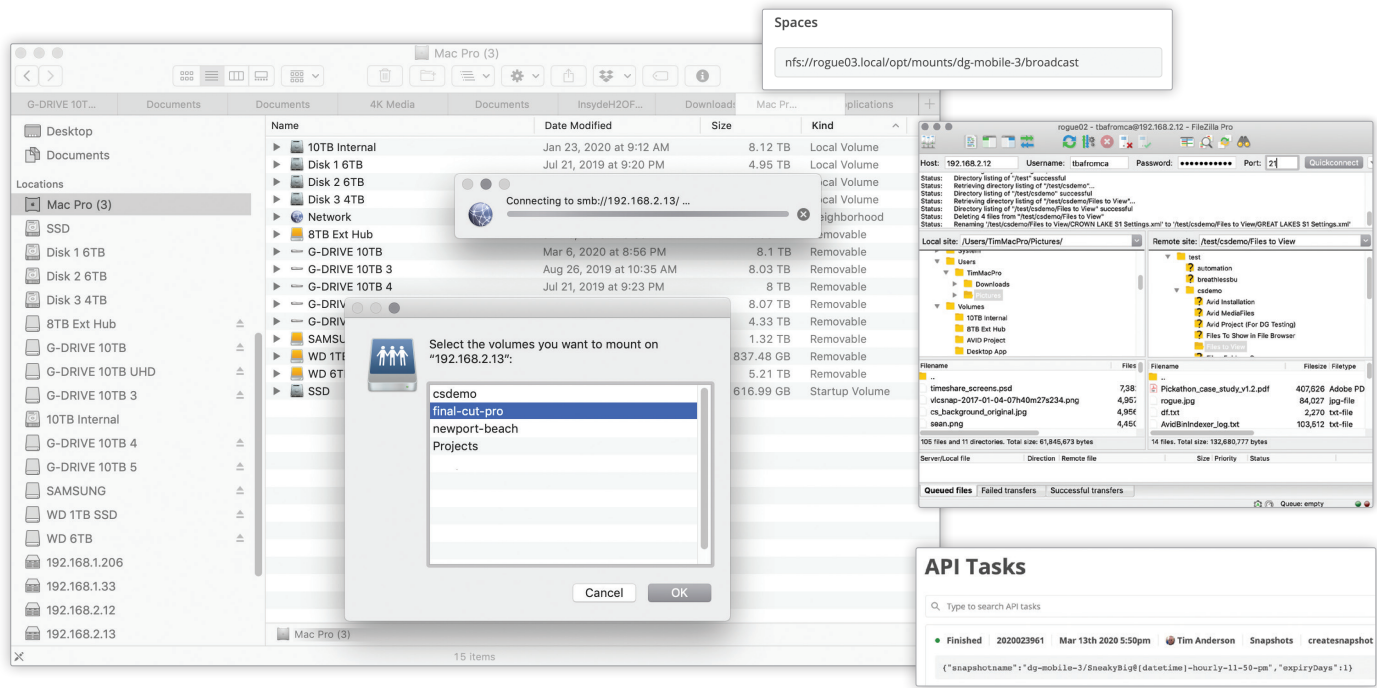
The 'New snapshot in twelvebay/csdemo' dialog shows the following configuration:

Field	Value
Schedule	Schedule in the Future
Optional Name	Append Additional Name to your Snapshot
Expire In	30 Days
Add a Name to Your Schedule	
Frequency	Once
Time	Hourly
Start Date	Feb 14th, 2020
Time	at 12:00AM
Task Description	Your task will repeat every hour starting at 12:00AM.

Client Driven Design

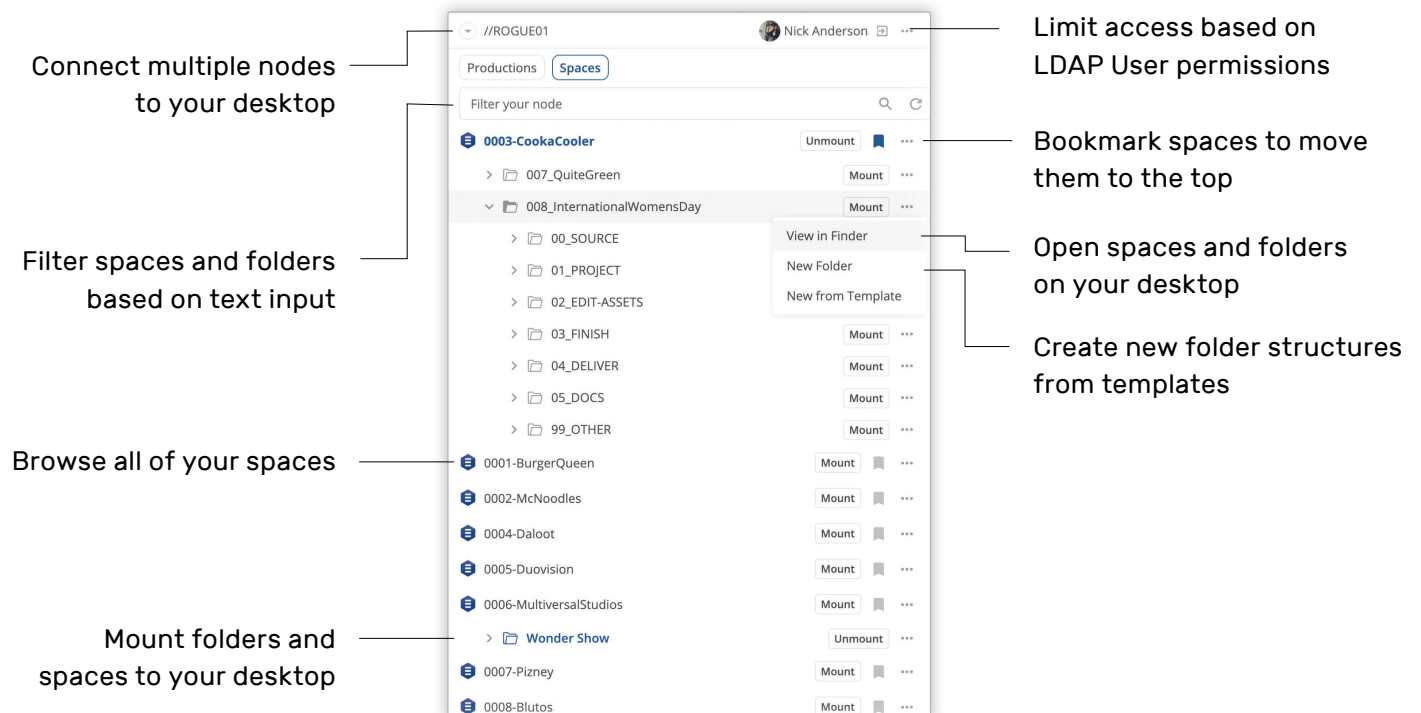
Get Connected

Mac, Windows, and Linux clients interact with the creative.space storage using industry-standard file protocols (SMB, NFS, FTP, or the REST API).

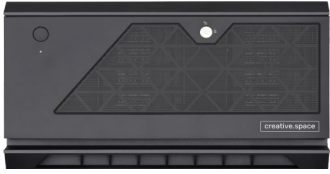


Desktop App

The creative.space desktop app makes it easy for creatives to connect to Spaces and collaborate without managing IP addresses.



The creative.space Systems



//ROGUE PRO

The //ROGUE PRO is a compact, quiet, and cool running storage solution that delivers fast speed for demanding workflows in a desktop form factor. It offers the capacity and performance of a rack of storage servers and can process twice as much data per second with its PCIe 4.0 backplane.



//AUTEUR

A rackmounted 12-bay version of the //ROGUE PRO, the //AUTEUR delivers enterprise-level storage at an entry-level price. 4K+ capable and competitively priced, it offers scalable performance, capacity, and density and is tailored to your workflow.



//DEUS EX

The //DEUS EX is the ultimate storage solution for video content creation teams. This rack mounted server can store up to 24 drives, with four high-bandwidth slots for SSD. Choose the //DEUS EX for fast and reliable shared storage that can adapt to your changing needs.



//TANK

The //TANK focuses on scalable capacity, configurable as RAID. It is a high-density solution for corporations, news organizations, OTT platforms, etc. and offers long-term storage for finished and reusable content that can be accessed through the creative.space app. Affordable monthly or annual rate.

creative.space®

NABSHOW
of the **PRODUCT**
YEAR 2022
WINNER



The Top 10 Reasons to Choose creative.space

1. Designed specifically for media production workflows, the creative.space enterprise-class collaborative storage is performance-optimized.
2. Enjoy controlled access to network shares, the web, and applications based on extended user, group, and role-based rights, enabled by a built-in LDAP server.
3. The comprehensive creative.space system dashboard allows you to quickly monitor storage capacity and availability, connected users and their activities, scheduled tasks, network statistics, and system information, all in one web page.
4. The web-based Spaces explorer makes it easy to search, rename, delete, preview, and download files.
5. Real-time performance and health monitoring provides valuable insights into thousands of system metrics, charts, and alarms.
6. With On-Premise Managed Storage as a Service (SaaS), you have the freedom to upgrade to the latest technologies, reduce capital expenditures, and rely on a predictable fixed monthly cost for hardware, maintenance, and support.
7. The in-house software development team at DigitalGlue focuses on automating manual steps in your daily workflow.
8. Folder and file templates automate the creation of new projects with user-defined variables and custom permissions.
9. Protect your valuable files from accidental deletion or ransomware with snapshots, which provide a safe way to recover data with read-only backups.
10. Save network bandwidth and computer resources with creative.space's intelligent web-based interface to ingest, copy, synchronize, and archive data between pools, spaces, and external USB devices.