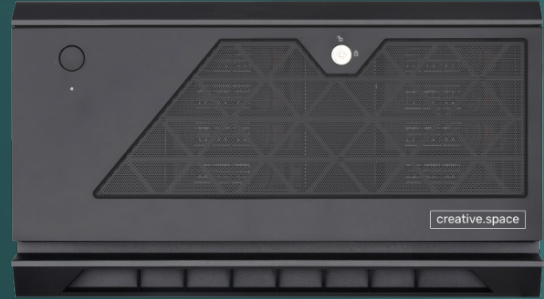


# //ROGUE PRO



PCIe 4.0/HDD/  
SSD/NVMe

#### TARGET WORKFLOWS:

- Small to Medium Video Teams
- Freelancers
- On-set Media Management
- Collaboration On the Go

#### KEY FEATURES:

- 128-bit File System
- AMD Ryzen 9 PCIe 4.0 CPU 4.6 GHz Processor
- 8x SATA or SAS Drive Bays
- 2 x 10 Gb/s Ethernet Ports
- 16/18/20 TB Helium-filled HDDs
- 3.2/7.68/12.8/15.36 TB NVMe SSDs

## ENTERPRISE-LEVEL PERFORMANCE, WITHOUT ENTERPRISE-LEVEL PROBLEMS

The //ROGUE PRO is quiet, runs cool, and is easy to manage while delivering blazing fast speed for the most demanding workflows. Small enough to sit directly in your workspace, the //ROGUE PRO achieves the capacity and performance typically expected from an entire rack of storage servers with the power to process twice as much data per second using a PCIe 4.0 backplane. This compact collaboration server allows multiple users to access a centralized storage pool. With creative.space, users are able to seamlessly exchange project data by referencing the same storage and file paths, eliminating the relinking process altogether.

The //ROGUE PRO delivers consistent read and write speeds of up to 1065 MB/s for users accessing the local network via 10 GbE. An integrated VPN, such as ZeroTier or Fortinet, enables remote users to connect over the internet and mount shared storage spaces to their desktop for seamless proxy editing. The built-in LDAP server, integrated with creative.space's workflow software, offers advanced access control to files based on users and groups.

Managing your data is made simple with creative.space's Web and Desktop Applications, which come standard with every system. The built-in FTP server, coupled with the authentication system, enables users to transfer and even sync folders and files over the internet peer-to-peer. Other features, such as the ability to create Folder Structure Templates, the Spaces Browser, and Snapshots, are designed to keep your content organized, accessible, and secure.

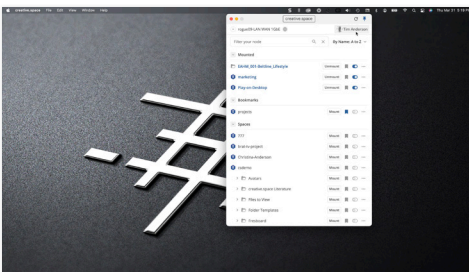
To learn more email [sales@digitalglue.com](mailto:sales@digitalglue.com) or call 888.519.2021



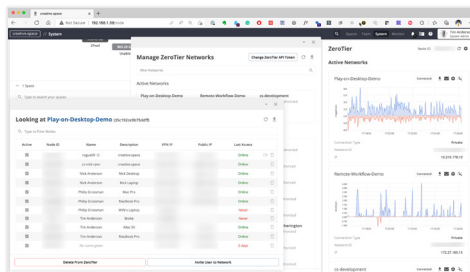
# RE-IMAGINE STORAGE AS A POWERFUL PLATFORM



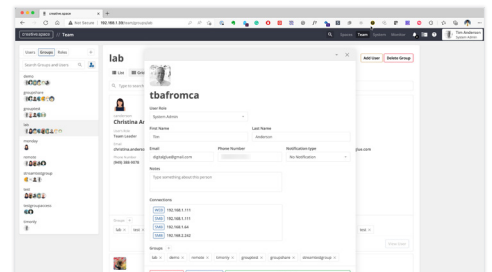
We've created a central hub for your data to make it easier for you and your team to navigate, collaborate, and participate in the creative process. The software included with every creative.space system makes everyday tasks quick and intuitive so that you can spend less time juggling drives and more time focusing on being creative.



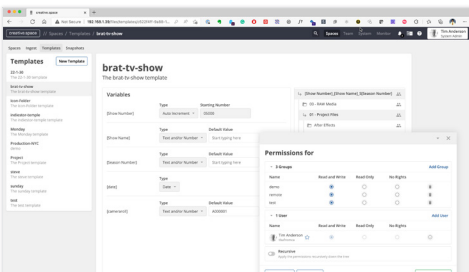
**Desktop App**  
Divide your storage into shared spaces to collaborate in.



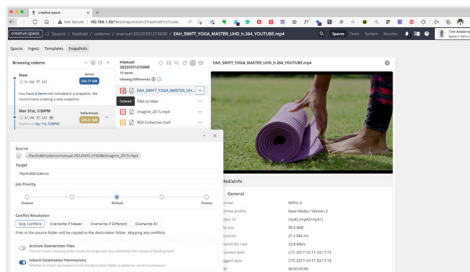
**Remote Access via VPN**  
Connect remotely using a built-in VPN or provide your own.



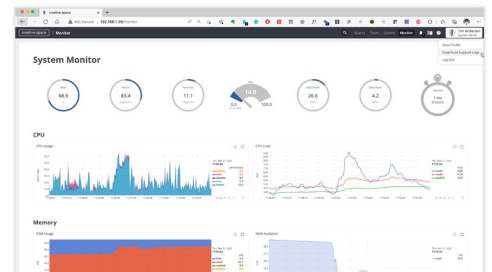
**Access Control**  
Manage user groups and roles to control access to your data.



**Folder Structure Templates**  
Apply templates to create folders and files with custom variables.



**Snapshots**  
Create instant read-only copies of your data to pull back deleted or modified files.



**Monitoring and Alerts**  
Over 2000 metrics captured every second to trigger pre-built alarms.

