

//AUTEUR

4K READY NAS STORAGE



TARGET WORKFLOWS:

- Video Production
- VFX
- Multi-Channel Live Recording
- AR/VR
- Content Distribution (CDN)

KEY FEATURES:

- PCIe 4.0 Architecture
- 2U 12 Hot Swap SAS Bays
- Intel® 3rd Gen Xeon Processors
- Up to 12 16/18/20 TB Helium-filled Hard Drives or 3.2/7.68/12.8/15.36 TB SSDs
- 2x 10 Gb/s Ethernet Ports (Optional 40GbE)
- Up to 4 TB of GDDR4 SDRAM
- USB 3.2 Ports

OPTIMIZED FOR 4K/6K/8K COMPRESSED WORKFLOWS

The //AUTEUR is a shared storage solution that caters to the needs of modern creatives. With just a few easy steps, you can be up and running, collaborating on high-resolution source and intermediate video files. The included content management and workflow features, like the ability to create Folder Structure Templates, the Spaces Browser, and Snapshots, guarantee that your content remains well-organized, easily accessible, and fully protected.

BUILT FOR YOUR NEEDS TODAY AND READY TO SCALE

With creative.space's flexible OPEX model, expanding to meet your team's evolving capacity needs is a breeze. When you're ready for an upgrade, simply let us know and we'll adjust your contract to reflect the new monthly rate. We'll even ship the new drives straight to your door, ensuring minimal downtime. To accommodate more users or high-performance VFX workflows, all you need is an upgraded CPU, additional RAM, and NVMe drives.

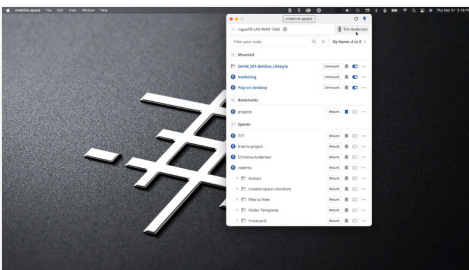
To learn more email sales@digitalglue.com or call 888.519.2021



RE-IMAGINE STORAGE AS A POWERFUL PLATFORM

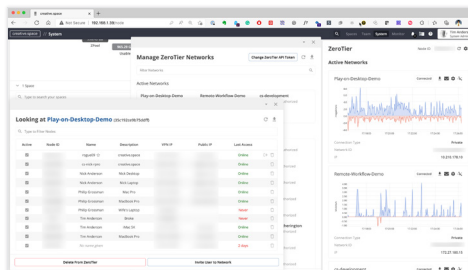


We've created a central hub for your data to make it easier for you and your team to navigate, collaborate, and participate in the creative process. The software included with every creative.space system makes everyday tasks quick and intuitive so that you can spend less time juggling drives and more time focusing on being creative.



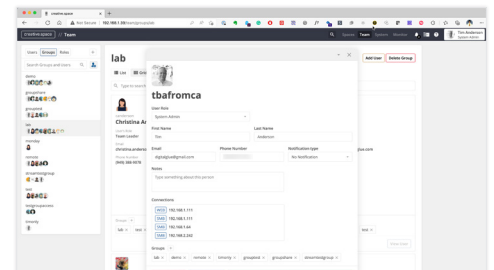
Desktop App

Divide your storage into shared spaces to collaborate in.



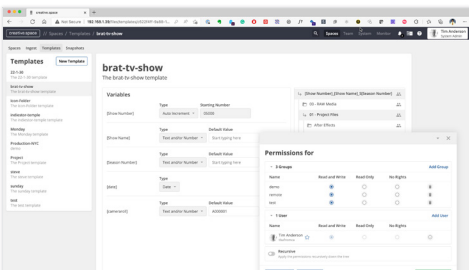
Remote Access via VPN

Connect remotely using a built-in VPN or provide your own.



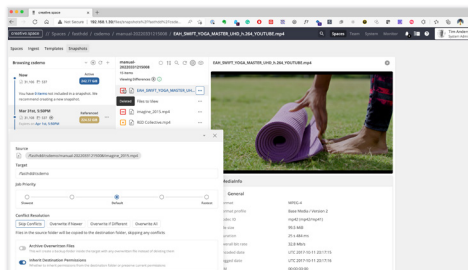
Access Control

Manage user groups and roles to control access to your data.



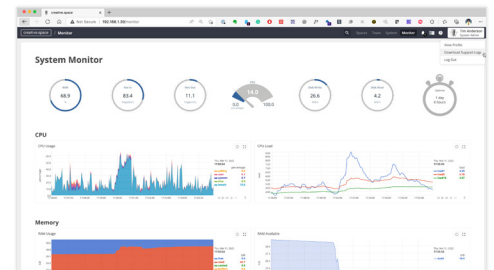
Folder Structure Templates

Apply templates to create folders and files with custom variables.



Snapshots

Create instant read-only copies of your data to pull back deleted or modified files.



Monitoring and Alerts

Over 2000 metrics captured every second to trigger pre-built alarms.

