

"We only pay monthly for the services we need as opposed to shelling out a large amount for capital from the get go. Particularly with the company where we were at the time, that was one of the biggest reasons it was easy to convince management. We could dip our toes in the water and let them see."

Chase Logan

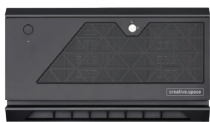
Head of Post Production
Brat TV

Affordable Shared Storage Built for Your Budget

Acquiring high-performance shared storage no longer requires a large upfront investment. The creative.space platform provides storage as a managed service with fixed monthly or annual payments that allow teams to scale over time. This unique On-Premise Managed Storage (O.P.M.S.) service model converts storage from a capital expenditure (CAPEX) to an operational expenditure (OPEX), making it accessible to more teams and eliminating the burden on customers to manage depreciating assets. Our all-inclusive service uses built-in 24/7 monitoring to provide proactive support without the cost of an additional support contract.

- Affordable monthly operational cost model
- Ability to scale your creative.space storage up over time without large capital expenditures, simply an increase to your monthly cost
- Almost immediate and ongoing return on investment through reduced labor and increase of uninterrupted creative output
- No additional Service Level Agreement required

Choose from Five Next-Generation NAS Solutions



//ROGUE PRO
PCIe 4.0/HDD/SDD/NVMe



//AUTEUR
High-Performance HDD



//DEUS EX
Hybrid HDD/SDD



//BREATHLESS
All Flash NVMe



//TANK
Scale Out HDD

To learn more email sales@creative.space or call **888.519.2021**



“We were all skeptical because we’d heard theoretically what was possible. Often with gear, the real world realization is not what was advertised. That actually wasn’t the case for us with creative.space. When we plugged it up, it was as close to theoretical as I’ve ever seen. It was blazing fast to the point where switching from direct attached to network attached storage was actually faster for us. It was an unprecedented experience in that regard. I was used to losing a generation of speed.”

Taylor Bynum,
Manager of Post Production Operations
at Brat TV

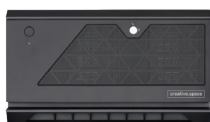
Edit at the Speed of Your Own Creativity

creative.space has developed a highly optimized implementation of OpenZFS which is designed to maximize data throughput to support the demanding needs of media organizations. The latest technology standards are utilized to ensure our systems provide the optimum performance in the industry.

- Performance 2x to 4x greater than traditional hardware-based RAID5
- Systems that can scale to support hundreds of users
- Network support for multiple 10/25/40 and 100GbE connections
- Scalable aggregate disk throughput to over 20GB/s
- RAID-Z options providing 1, 2, or 3 parity drives



Choose from Five Next-Generation NAS Solutions



//ROGUE PRO
PCIe 4.0/HDD/SDD/NVMe



//AUTEUR
High-Performance HDD



//DEUS EX
Hybrid HDD/SDD



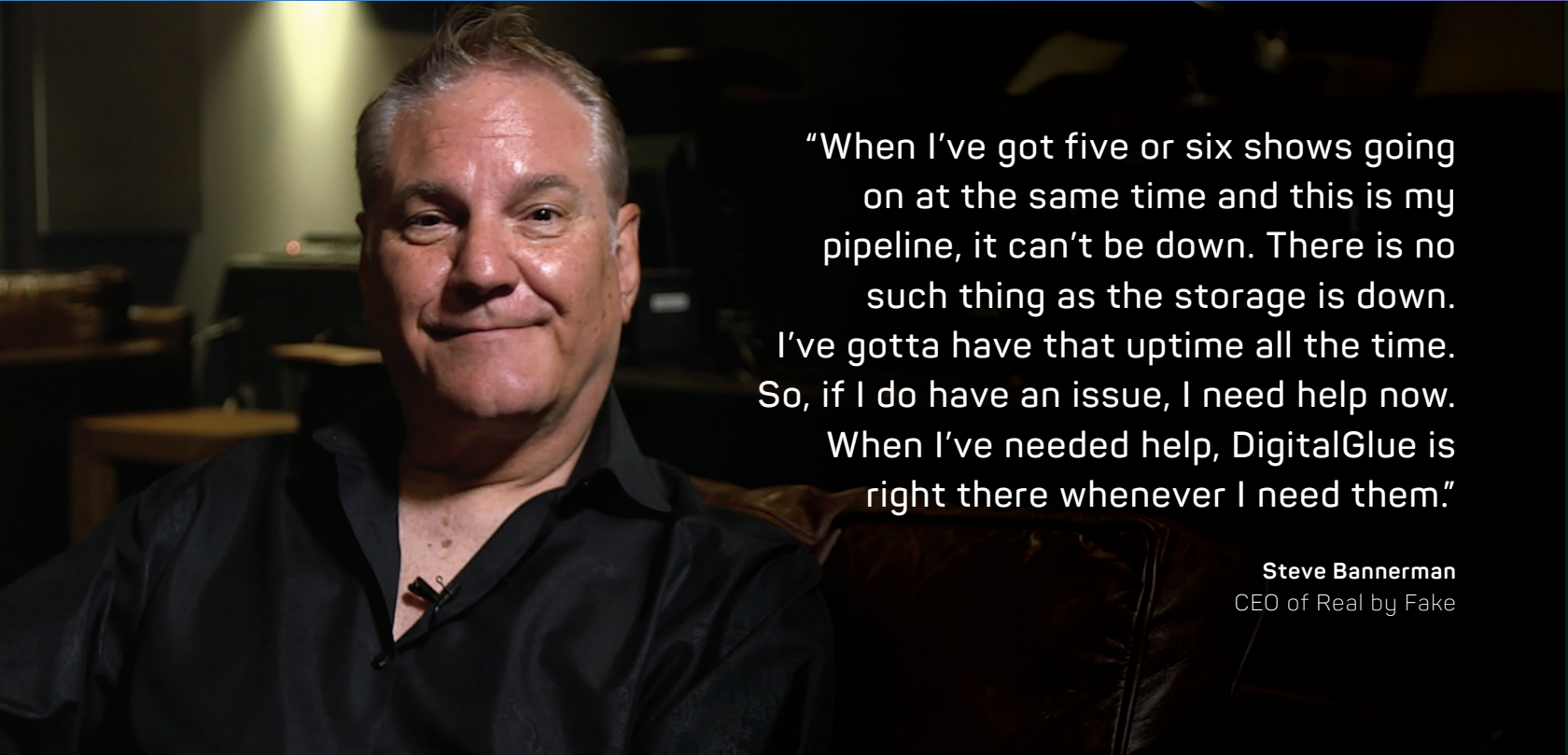
//BREATHLESS
All Flash NVMe



//TANK
Scale Out HDD

To learn more email sales@creative.space or call **888.519.2021**

creative.space®



“When I’ve got five or six shows going on at the same time and this is my pipeline, it can’t be down. There is no such thing as the storage is down. I’ve gotta have that uptime all the time. So, if I do have an issue, I need help now. When I’ve needed help, DigitalGlue is right there whenever I need them.”

Steve Bannerman
CEO of Real by Fake

Proactive Monitoring Keeps Your Storage Running

The creative.space solution is built from the ground up with robust monitoring at its core. Our 24/7 integrated proactive monitoring ensures our customers are not impacted by system issues. creative.space’s advanced monitoring tracks over 2000 metrics per second, triggering alarms that notify internal and external proactive support teams when potential issues arise.

- Over 2,000 metrics monitored every second on each of our systems to ensure uninterrupted service and performance
- A robust alarming system is designed to notify internal and external proactive support teams when potential issues arise
- Built-in monitoring dashboard displays intuitive charts for system management
- Administrators can view connected users as well as their usage to address bandwidth bottlenecks right away





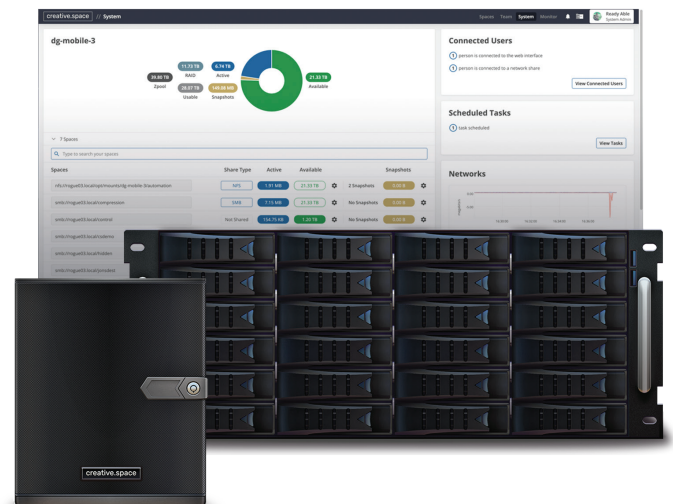
“You can manage everything by yourself. You don’t need to have any I.T. background. It’s just a matter of accessing the portal in the same way you would a website and then you are in and then from there you can manage anything.”

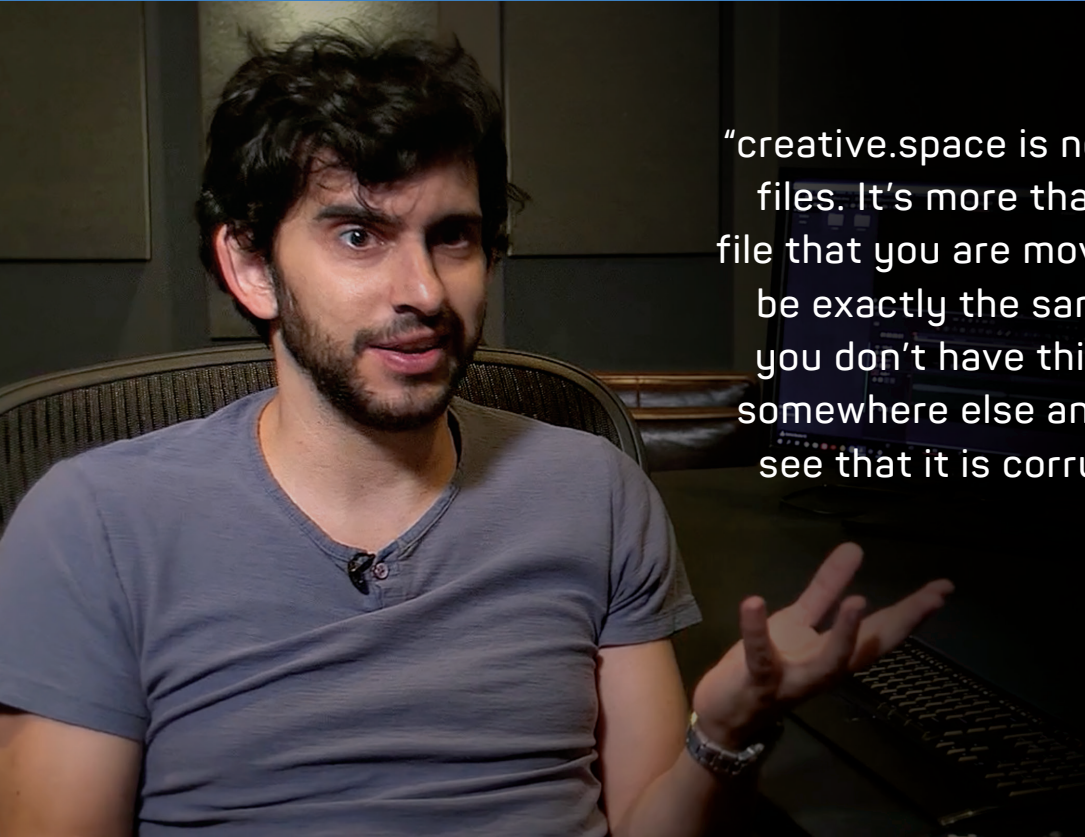
Borja Ribes Blanquer
DI Workflow Supervisor
at Real by Fake

Setup Your Storage and Continue Creating Faster Than Ever Before

creative.space was designed as a central hub for your content to make it easier for individuals and teams to navigate, collaborate, and participate in the creative process. The goal of creative.space’s software is to make everyday tasks quick and intuitive so that you can spend less time juggling drives and more time focusing on being creative. Each creative.space system provides an integrated solution that would normally require a data center with multiple servers and reliance on a specialized I.T. staff.

- Simple interface allows non-technical users to manage the creative.space storage
- The straightforward desktop application allows quick access to mount spaces without the need to understand the underlying complex network
- The built-in template system makes easy work of setting up custom project directory structures
- The built-in LDAP user management is designed to simplify the task of managing users and groups
- The built-in ZeroTier integration makes accessing your content from anywhere in the world simple and secure
- No need to use disk partitions to increase the size of your available storage





“creative.space is not just a place to put your files. It’s more than that. You know that the file that you are moving or copying is going to be exactly the same as the one you had. So you don’t have this issue of copying the file somewhere else and trying to open it only to see that it is corrupted. That can’t happen.”

Borja Ribes Blanquer
DI Workflow Supervisor
at Real by Fake

How ZFS Protects Your Data

The Zettabyte File System (ZFS) was built from the ground up with data integrity and security in mind. creative.space leverages this foundation to build a robust solution. With up to three (3) sets of parity data and copy-on-write, our solutions ensure the integrity of your media throughout the creative process.

- Three (3) levels of RAID-Z available to allow you to decide the amount of redundancy required in your storage solution
- ZFS copy-on-write eliminates corruption of data during hardware or software failures of the system ensuring your data is always secure
- Easy to manage snapshots allow for an additional level of data integrity all but eliminating the impacts of a ransomware attack or accidental file deletion on your storage
- Elimination of the “RAID whole” and data loss due to hardware RAID card failures. creative.space drives can be removed and installed in new chassis without data loss

